



FUJISPRAY[®]

AUTO

PRODUCT CATALOGUE

INTRODUCTION

Welcome to Fuji Spray Auto™

Building on a foundation of 35+ years of spray expertise, Fuji Spray Auto features compressor spray guns that align with the Fuji Spray legacy of excellence, while offering the collision repair and car-refinishing industries high-performance and versatility at a competitive price.

Fuji Spray Auto is committed to delivering spray professionals the optimal combination of comfort and efficiency, reducing time per job in the booth and maximizing material savings.

Fuji Spray Auto is a division of Fuji Spray, a Canadian-based designer and manufacturer of exceptional spray equipment used around the world. Fuji Spray's best-in-class spray equipment delivers a perfect finish every time for a wide range of finishing industries, including automotive, woodworking, resurfacing and sunless tanning. This diverse experience is backed by unparalleled customer service, which has made Fuji Spray a leader in the global spray equipment industry.

THE PERFECT FINISH STARTS WITH FUJI SPRAY®

At Fuji Spray, we care about the finish, and we start by focusing on the customer experience.

We care about making top-of-the-line, easy to use spray system that deliver a perfect finish every time. Our products are used for a wide range of finishing industries, including woodworking, automotive refinishing, marine, bathtub & kitchen resurfacing, and sunless tanning.

We care about your total satisfaction - in our products and our customer service. We provide training, product support and helpful insights that will help you achieve the best results with our equipment.

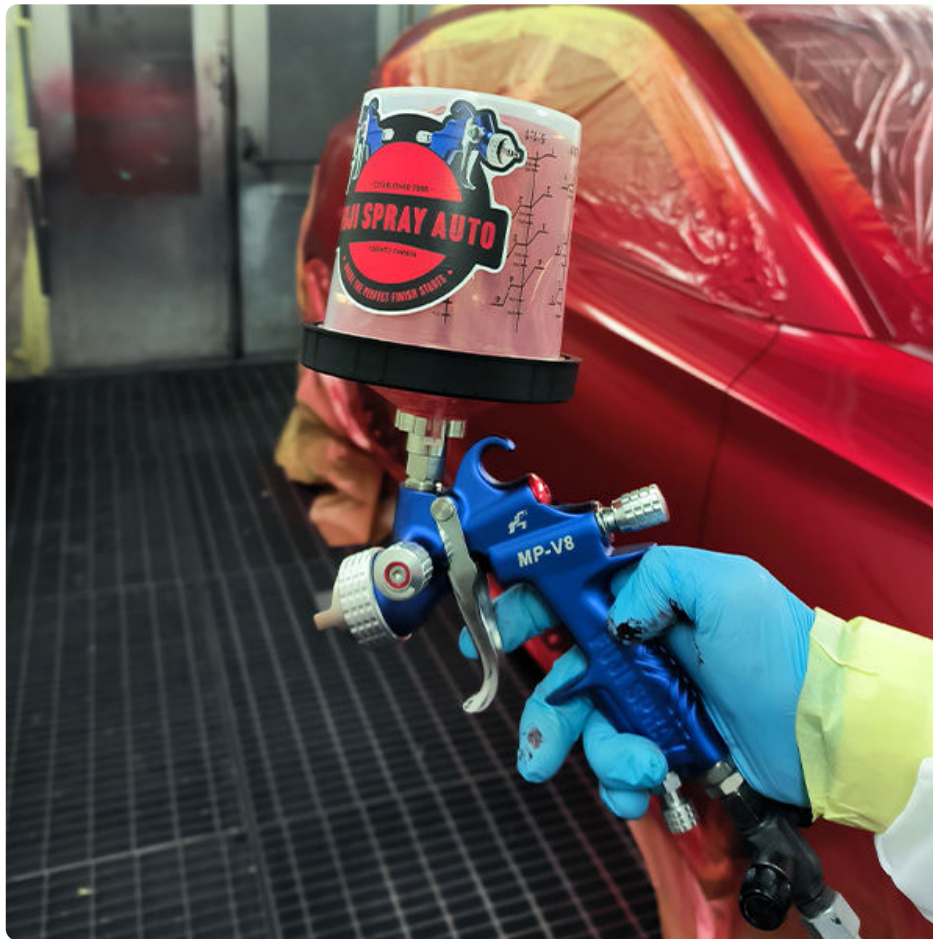
You're part of the Fuji Spray family and we want to help you finish strong.

Fuji Spray Auto

FUJI SPRAY AUTO CATALOGUE

Index

Introduction	1
<hr/>	
V8 Series	3
<hr/>	
V8 Series Parts Diagram	8
<hr/>	
X Series	11
<hr/>	
MPX-30 Parts Diagram	14
<hr/>	
LX-20 Parts Diagram	18



V8 SERIES

MP-V8™

H-V8™



V8 SERIES

MP-V8™ MID-PRESSURE SPRAY GUN

SPECIFICATIONS

- Operating range: 9-35 psi
- Air consumption: 14.7 cfm
- Air inlet size: 1/4" BSP + NPS
- Air supply hose: 6.5 x 10mm
- Fluid coupler: 3/8" PF
- Gun weight (without cup): 521g (1.15 lbs)

Designed with Fuji Spray®'s Mid-Pressure technology, the MP-V8™ is the superior choice for professional clear coat application. The MP-V8™ features a side-mounted fan pattern control allowing you to precisely set your fan width to match your project size.

Suitable for high volume facilities, the MP-V8™ has a forged aluminum spray gun body with anodized fluid passages for use with waterborne or solvent-based coatings.

KEY FEATURES

- Precise side-mounted fan pattern control reducing overspray and waste
- Forged aluminum gun body with anodized internals
- High transfer efficiency means less overspray and increased savings
- Produces up to 315mm (12.4 inches) fan pattern
- Fewer internal components for easy maintenance
- Tip sizes ranging from 1.2mm to 2.2mm
- South Coast Air Quality Management District (SCAQMD) certified

MP-V8™ VARIATIONS

#6852G-MP-V8	MP-V8 Spray Gun
#6852G-MP-V8-A	MP-V8 Spray Gun with 600cc Aluminum Cup
#6852G-MP-V8-N	MP-V8 Spray Gun with 600cc Nylon Cup
#6954G-MP-V8	MP-V8 Spray Gun with 360° Swivel Fitting

AIR CAP SET SIZES

#6800MP-V8-1.2	Air Cap Set (1.2mm)
#6800MP-V8-1.3	Air Cap Set (1.3mm) (Standard)
#6800MP-V8-1.4	Air Cap Set (1.4mm)
#6800MP-V8-1.7	Air Cap Set (1.7mm)
#6800MP-V8-2.0	Air Cap Set (2.0mm)
#6800MP-V8-2.2	Air Cap Set (2.2mm)

APPLICATION TYPE

- Clear Coat Application
- Base Coat Application

PAINT CUP ADAPTERS

3M™	S15
DeKups®	DPC-31
Colad	A14
RPS®	3

ACCESSORIES

#6840	600cc Nylon Gravity Cup Assembly
#6841	600cc Aluminum Gravity Cup Assembly
#6873	Digital Gauge
#6882	Rebuild Kit



V8 SERIES

H-V8™ HVLP SPRAY GUN

SPECIFICATIONS

- Operating range: 9-28 psi
- Air consumption: 14.7 cfm
- Air inlet size: 1/4" BSP + NPS
- Air supply hose: 6.5 x 10mm
- Fluid coupler: 3/8" PF
- Gun weight (without cup): 521g (1.15 lbs)

Best suited for base and clear coat applications, the H-V8™ has a precise side-mounted fan pattern control capable of producing up to 325mm (12.8 inches) wide fan pattern, providing the coverage you need to get the job done.

The H-V8™ has few internal components, forged aluminum spray gun body with anodized fluid passages, and an optimized HVLP air cap resulting in a soft and consistent spray pattern.

KEY FEATURES

- Precise side-mounted fan pattern control reducing overspray and waste
- Forged aluminum gun body with anodized internals
- Optimized HVLP air cap for a soft spray pattern
- High transfer efficiency means less overspray and increased savings
- Produces up to 325mm (12.8 inches) fan pattern
- Fewer internal components for easy maintenance
- Tip sizes ranging from 1.2mm to 2.2mm

H-V8™ VARIATIONS

#6863G-H-V8	H-V8 Spray Gun
#6863G-H-V8-A	H-V8 Spray Gun with 600cc Aluminum Cup
#6863G-MP-V8-N	H-V8 Spray Gun with 600cc Nylon Cup
#6965G-H-V8	H-V8 Spray Gun with 360° Swivel Fitting

AIR CAP SET SIZES

#6890H-V8-1.2	Air Cap Set (1.2mm)
#6890H-V8-1.3	Air Cap Set (1.3mm)
#6890H-V8-1.4	Air Cap Set (1.4mm) (Standard)
#6890H-V8-1.7	Air Cap Set (1.7mm)
#6890H-V8-2.0	Air Cap Set (2.0mm)
#6890H-V8-2.2	Air Cap Set (2.2mm)

APPLICATION TYPE

- Base Coat Application

PAINT CUP ADAPTERS

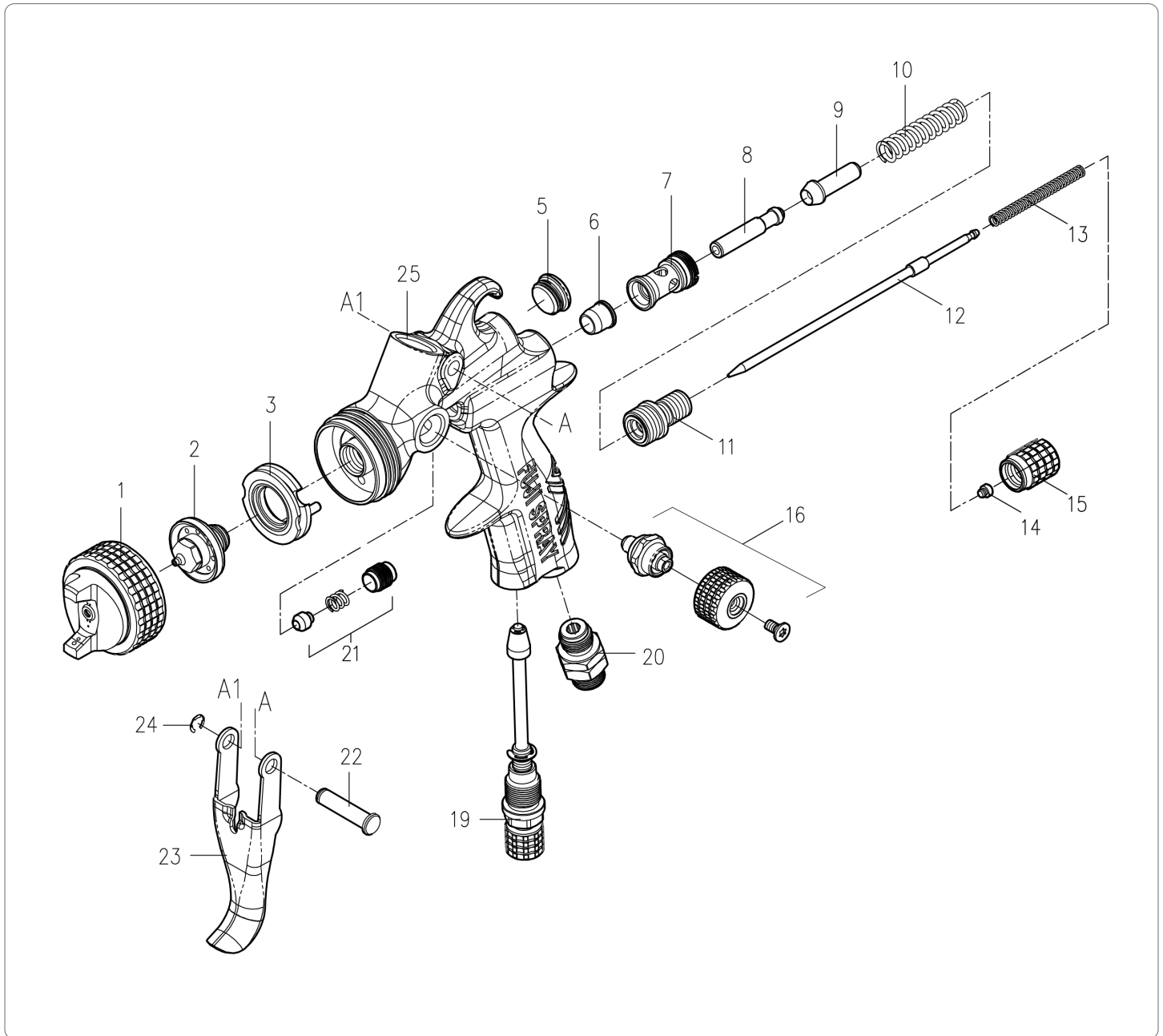
3M™	S15
DeKups®	DPC-31
Colad	A14
RPS®	3

ACCESSORIES

#6840	600cc Nylon Gravity Cup Assembly
#6841	600cc Aluminum Gravity Cup Assembly
#6873	Digital Gauge
#6882	Rebuild Kit

PARTS DIAGRAM

V8 Series



PARTS DIAGRAM

V8 Series

ITEM	PART	NAME	NOTE
1	-	Air Cap with Collar	
2	-	Fluid Nozzle	
3	6803	Air Distributor	*
5	6805	Rear Barrel Plug with Seal	
6	-	Valve Seal	X
7	-	Spindle Valve Housing	X
8	6808	Spindle Valve Bushing	*
9	6809	Spindle Valve	*
10	6810	Spindle Valve Spring	*
11	6811	Fluid Screw Nut	*
12	-	Needle	
13	6813	Needle Spring	*
14	6814	Needle Spring Cap	*
15	6815	Fluid Control Knob	*
16	6816	Fan Pattern Control Assembly	
19	6819	Air Control Assembly	
20	-	Air Inlet	X
21	6821	Needle Packing Assembly	*
22	6822	Trigger Pin	
23	6823	Trigger	
24	6824	Trigger Retaining Ring	
25	-	Fluid Coupler	X

NOTE

(X) Part not to be removed

(*) Part available with Rebuild Kit (#6882)



X SERIES

MPX-30™

LX-20™



X SERIES

MPX-30™ MID-PRESSURE SPRAY GUN

SPECIFICATIONS

- Air supply pressure: 36 psi at gun inlet (2.5 bar)
- Air consumption: 13.8 cfm
- Air inlet size: 1/4" BSP + NPS
- Air supply hose: 5/16" ID
- Fluid coupler (gravity feed): M16 x 1.5P
- Gun weight (without cup): 502g (1.1 lbs)

With a handle ergonomically designed to reduce user fatigue, the MPX-30™ provides increased application speed without sacrificing performance. Intuitive, lightweight and easy to maintain, the MPX-30's nearly 13" wide fan pattern, paired with a precise side-mounted fan pattern control, minimizes overspray and reduces waste.

The MPX-30™ features optimized internal air passages to provide increased atomizing air for modern high-solid coatings.

KEY FEATURES

- High transfer efficiency means less overspray and increased savings
- Precise side mounted fan pattern control reduces overspray and waste
- Produces up to 330mm (13 inches) fan pattern
- Optimized air cap design results in soft spray pattern and outstanding atomization
- VOC compliant
- 100% stainless steel fluid passages and a wide offering of air cap set sizes
- MPX-30™ kits include aircap sets and regulator
- Also available in a siphon-feed variation
- South Coast Air Quality Management District (SCAQMD) certified

MPX-30™ VARIATIONS

#6355G-MP-C-14K	MPX-30 Gravity with 600cc Nylon Cup + Extra 1.3mm
#6355G-MP-N-14K	MPX-30 Gravity + Extra 1.3mm (No cup)

AIR CAP SET SIZES

#6300MPX-1.0	Air Cap Set (1.0mm)
#6300MPX-1.3	Air Cap Set (1.3mm)
#6300MPX-1.4	Air Cap Set (1.4mm) (Standard)
#6300MPX-1.7	Air Cap Set (1.7mm)
#6300MPX-2.0	Air Cap Set (2.0mm)

APPLICATION TYPE

- Clear Coat Application

PAINT CUP ADAPTERS

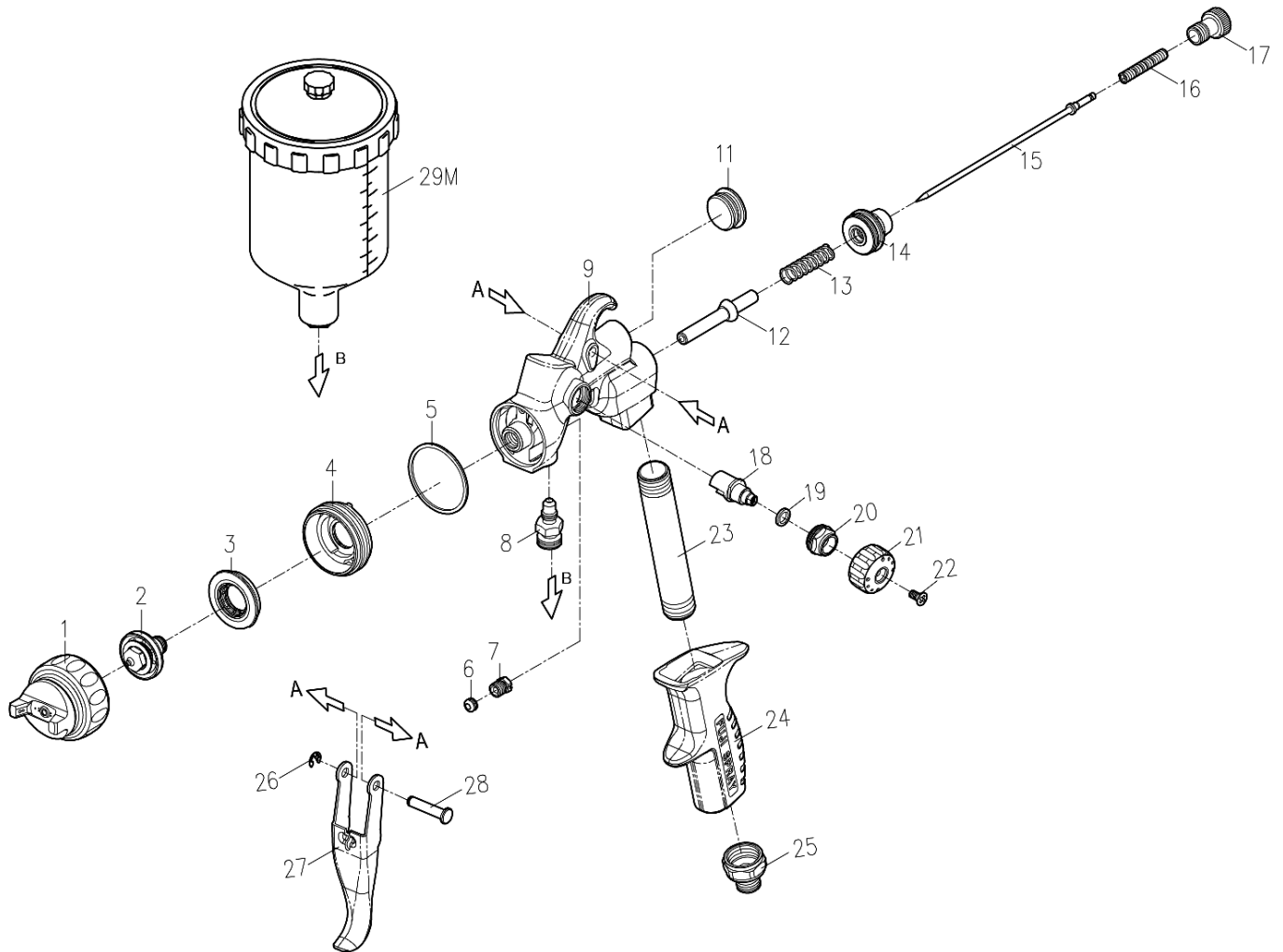
3M™	S2
DeKups®	DPC-11
Colad	A09
RPS®	1

ACCESSORIES

#6360	600cc Gravity Cup Assembly
#6375	3oz Gravity Cup Assembly
#8081-3	Gaskets (3oz Cup) (3 pack)
#6380	Pressure Regulator Gauge
#6382	Rebuild Kit

PARTS DIAGRAM

MPX-30™



PARTS DIAGRAM

MPX-30™

ITEM	PART	NAME	NOTE
1	-	Air Cap & Collar	*
2	-	Fluid Nozzle	*
3	6303	Air Distributor	**
4	6204	Air Diffuser	**
5	6305	Air Diffuser Seal	**
6	6306	Needle Packing	**
7	6307	Needle Packing Nut	**
12	6312	Spindle Valve	**
13	6313	Valve Spring	**
14	6314	Fluid Screw Nut	**
15	-	Needle	*
16	6316	Needle Spring	**
17	6217	Fluid Control Knob	**
18	6318	Air Deflector	***
19	6319	Deflector Seal	***
20	6320	Control Knob Nut	***
21	6221	Pattern Control Knob	***
22	6322	Locking Screw	***
26	6326	Trigger Retaining Ring	
27	6327	Trigger	
28	6328	Trigger Pin	

NOTE

(*) Part only available together as a full Air Cap Set (#6300MPX-)

(**) Part available with Rebuild Kit (#6382)

(***) Part available in Pattern Control Assembly (#6383)



X SERIES

LX-20™ HVLP SPRAY GUN

SPECIFICATIONS

- Air supply pressure: 26 psi at gun inlet (1.8 bar)
- Air consumption: 15.2cfm
- Air inlet size: 1/4" BSP + NPS
- Air supply hose: 5/16" ID
- Fluid coupler (gravity feed): M16 x 1.5P
- Gun weight (without cup): 502g (1.1 lbs)

Featuring a nearly 13" wide fan pattern and an enhanced HVLP air cap design, the Fuji Spray® LX-20™ and its optimized air passages will decrease time in the spray booth and increase productivity. Easily adaptable to leading disposable cup systems, the LX-20™ is intuitive, lightweight and easy to maintain.

The LX-20™ features a unique comfort grip that reduces operator fatigue, allowing users to spray for extended periods of time.

KEY FEATURES

- High transfer efficiency means less overspray and increased savings
- Precise side mounted fan pattern control reduces overspray and waste
- Produces up to 330mm (13 inches) fan pattern
- Optimized air cap design results in soft spray pattern and outstanding atomization
- VOC compliant
- 100% stainless steel fluid passages and a wide offering of air cap set sizes
- LX-20™ kits include aircap sets and regulator
- Also available in a bottom-feed variation

MPX-30™ VARIATIONS

#6265G-LX-C-14K	LX-20 Gravity with 600cc Nylon Cup + Extra 1.2 and 1.7mm
#6265G-LX-N-14K	LX-20 Gravity + Extra 1.2 and 1.7mm (No cup)

AIR CAP SET SIZES

#6200LX-1.0	Air Cap Set (1.0mm)
#6200LX-1.2	Air Cap Set (1.2mm)
#6200LX-1.4	Air Cap Set (1.4mm) (Standard)
#6200LX-1.7	Air Cap Set (1.7mm)
#6200LX-2.0	Air Cap Set (2.0mm)

APPLICATION TYPE

- Base Coat Application

PAINT CUP ADAPTERS

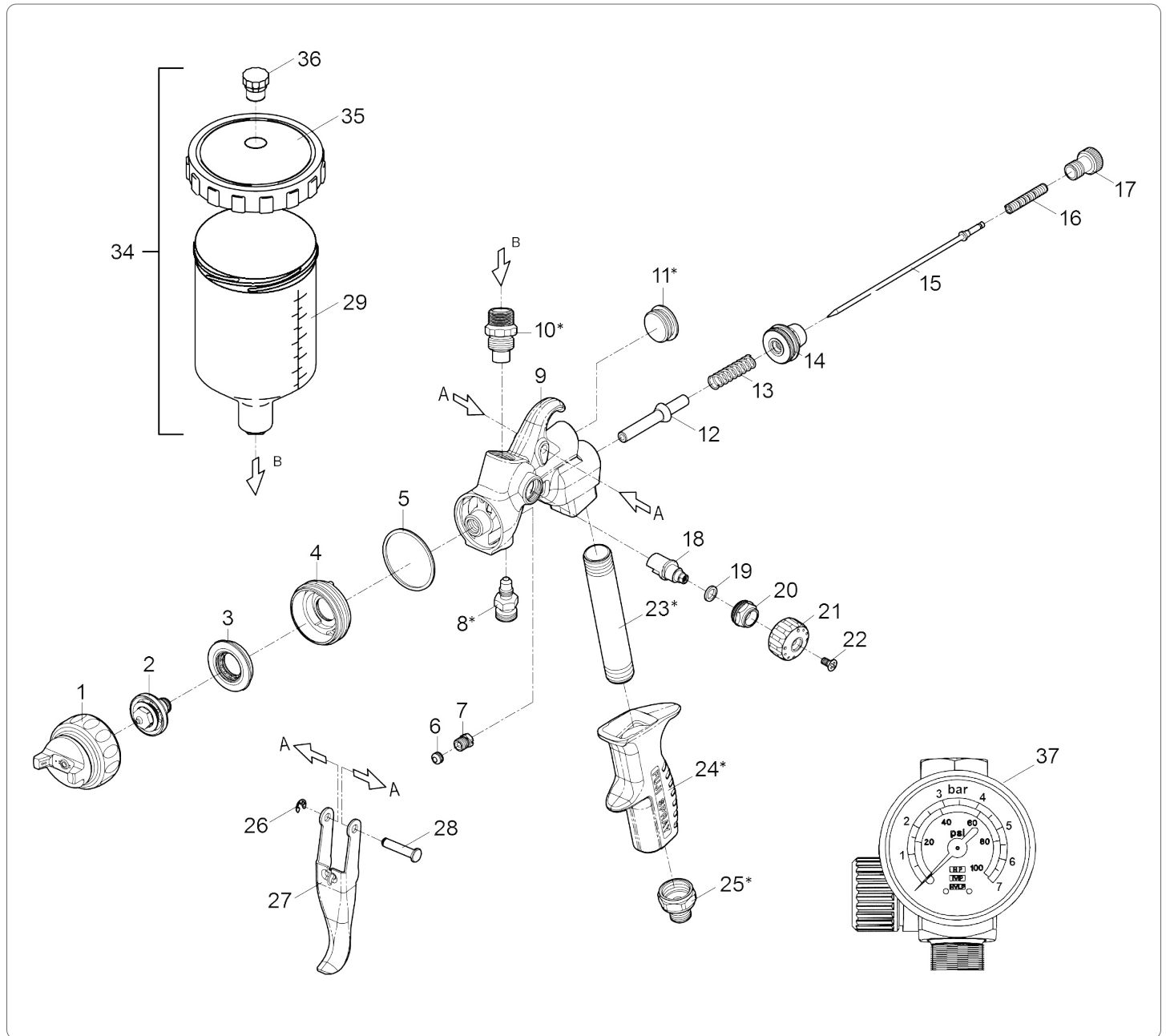
3M™	S2
DeKups®	DPC-11
Colad	A09
RPS®	1

ACCESSORIES

#6360	600cc Gravity Cup Assembly
#6375	3oz Gravity Cup Assembly
#8081-3	Gaskets (3oz Cup) (3 pack)
#6380	Pressure Regulator Gauge
#6282	Rebuild Kit

PARTS DIAGRAM

LX-20™



PARTS DIAGRAM

LX-20™

ITEM	PART	NAME	NOTE
1	-	Air Cap & Collar	*
2	-	Fluid Nozzle	*
3	6303	Air Distributor	**
4	6204	Air Diffuser	**
5	6305	Air Diffuser Seal	**
6	6306	Needle Packing	**
7	6307	Needle Packing Nut	**
12	6312	Spindle Valve	**
13	6313	Valve Spring	**
14	6314	Fluid Screw Nut	**
15	-	Needle	*
16	6316	Needle Spring	**
17	6217	Fluid Control Knob	**
18	6318	Air Deflector	***
19	6319	Deflector Seal	***
20	6320	Control Knob Nut	***
21	6221	Pattern Control Knob	***
22	6322	Locking Screw	***
26	6326	Trigger Retaining Ring	
27	6327	Trigger	
28	6328	Trigger Pin	

NOTE

(*) Part only available together as a full Air Cap Set (#6200LX-)

(**) Part available with Rebuild Kit (#6282)

(***) Part available in Pattern Control Assembly (#6283)

WE'RE HERE TO HELP

Contact Us

FUJI INDUSTRIAL SPRAY EQUIPMENT LTD.



800 Alness Street
North York, Ontario
M3J 2H5 Canada



TALK TO US

1-800-650-0930
416-650-1430
support@fujispray.com



VISIT OUR WEBSITE

www.fujisprayauto.com



FOR DISTRIBUTION-RELATED INQUIRIES

sales@fujispray.com

THE PERFECT FINISH STARTS WITH

FUJISPRAY[®]

 **AUTO**

www.fujisprayauto.com